

PEACE & QUIET

NOISE REDUCTION

- Peace & Quiet provides Australia's widest range of acoustic insulation materials to solve most noise problems. Materials can be supply and install or supply only.
- Walls and ceilings can be insulated from noise with a combination of soft fibre ABSORPTION and acoustic BARRIERS.
- Office partitions can be filled with soft fibre ABSORPTION. Acoustic BARRIER CURTAINS can be fitted above suspended ceilings to reduce inter-office noise transmission.
- Existing floors can be insulated from above or below with acoustic barrier and dense soft fibre absorption. If floors are carpeted then 6kg/5PE BARRIER laminated to an impact foam can be specified. Underside of concrete floors can be battened and treated.
- Concrete slab, timber floors and floating floors can be insulated from noise with IMPACT and ISOLATION FOAMS.

NOISE INSULATION EXAMPLES TO MEET BCA;-

FIG.1 **Wall to exceed Rw52**

To insulate a brick party wall

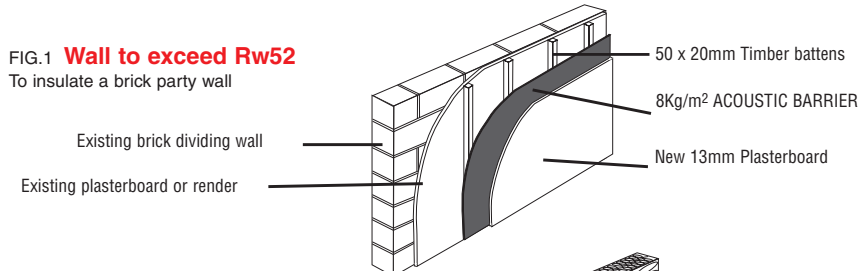


FIG. 2 **Wall to exceed Rw45**

To insulate a stud party wall

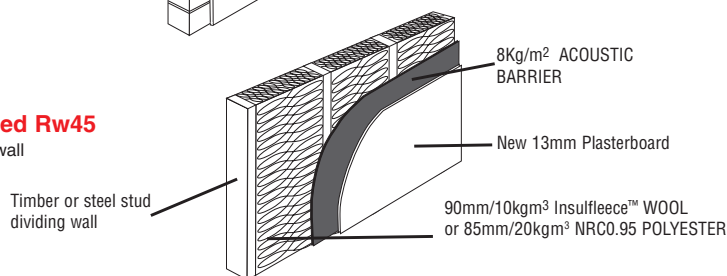


FIG.3 **Over office partition flanking noise CAC48**

To reduce flanking noise passing over partitions through suspended ceiling void.

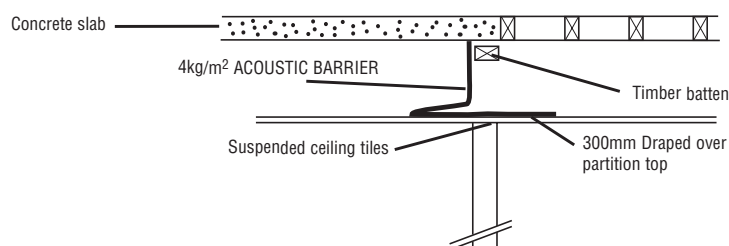


FIG.4 **Office partition wall Rw40**

To insulate an entire office partition wall to reduce noise transmission.

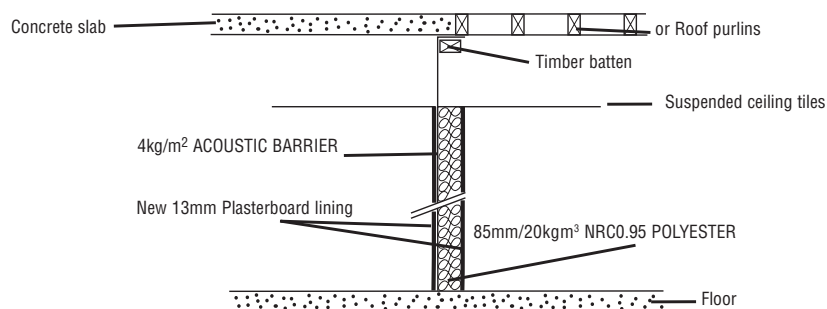


FIG. 5 **Intermediate floor to exceed RW45** - To insulate polished timber floor where flooring can be lifted and one extra layer of 13mm fire rated plasterboard can be fitted under ceiling.

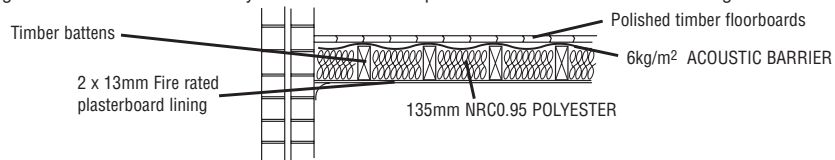


FIG.6 **Intermediate floor to exceed RW45** - To insulate polished timber floors where ceiling can be removed and two extra layers of 13mm fire rated plasterboard can be fitted.

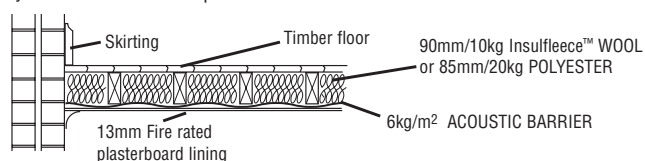
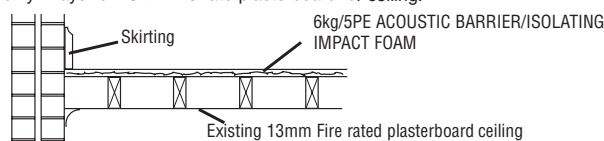


FIG.7 **Intermediate floor to exceed RW45** - To insulate timber floors where soft floor coverings are proposed (Rw 42) with only 1 layer of 13mm fire rate plasterboard for ceiling.



- Waste pipes, air conditioning ducts and plant enclosures can be lagged to reduce noise and meet BCA standards.
- Internal environment noise and reverb can be absorbed with fabric covered PQ Panels or convoluted absorption FOAMS.
- Insulfleece™ New Australian WOOL insulation absorbs noise more effectively than most man made fibres.
- Polyroll™ POLYESTER is available in a wide range of thicknesses and densities. Both are safe, non allergenic and fire rated to AS1530/3.
- Noisebar™ is an Australian owned and manufactured ACOUSTIC BARRIER.
- MAGNETITE® secondary window panels and LORIENT® acoustic door and window seals effectively reduce noise transmission through existing windows and doors.
- Mechanical noise can be absorbed with NoiseSorb mechanical noise absorption foam panels.

FIG. 8 **Concrete intermediate floor to exceed RW60** - To insulate new or existing concrete slab floor/ceilings.

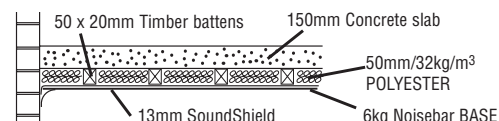


FIG. 9 **Concrete and tiled floor L'nT,w+Ci=44** - To insulate new or existing concrete slab wet area floors before tiling. Edges returned at wall to isolate floor from walls.

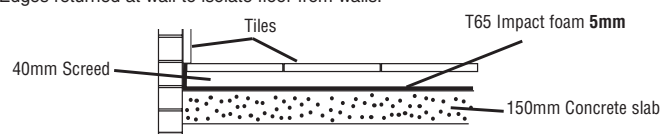


FIG.10 **Concrete and floating timber floor L'nT,w+Ci=49** - To insulate new or existing concrete slab wet area floors before tiling.

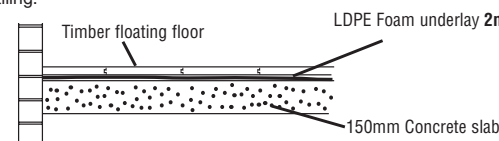


FIG.11 **Floating timber floors over concrete slab** - To insulate impact noise from timber floors to concrete slab.

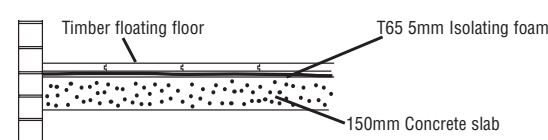


FIG.12 **Pipe and duct lag with lining to Rw45** - To lag waste pipes and A/C ductwork, to line plant enclosures. Single wrap gives **Rw27**, with 10mm plasterboard lining **Rw30** with 10mm plasterboard lining and 50mm poly in bulkhead **Rw45**.

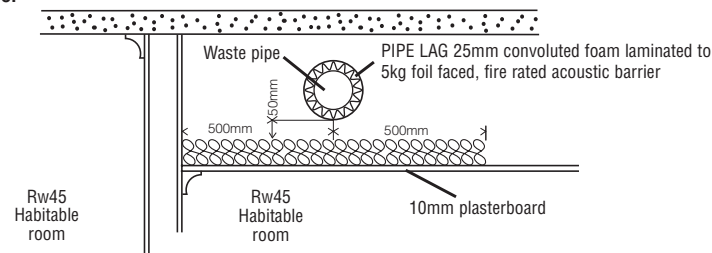


FIG.13 **PQ Panels for reverb absorption to NRC 0.8125** - PQ Panels combine high absorption open cell foam with noise neutral decorator fabrics to absorb reverb noise in conference rooms, board rooms, call centres and restaurants.

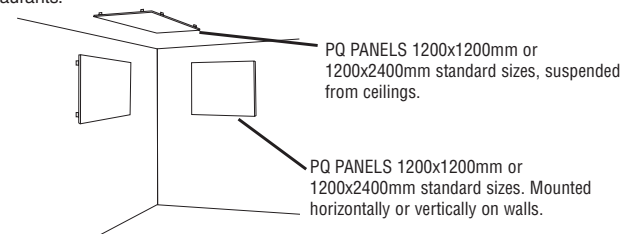


FIG.15 **Ceilings to exceed Rw45** -To insulate existing ceilings, existing ceiling joists and existing ceiling.

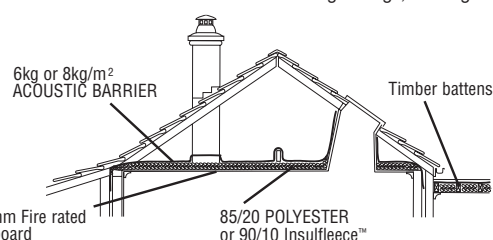
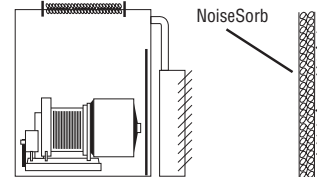


FIG.16 **NRC 1.0** -NoiseSorb mechanical noise absorption panels absorb plant, pump, air conditioning and all other plant noise.



For more information please email: kevin@peaceandquiet.net.au. or phone Sydney (02) 9450 1945 or visit our website at:

www.peaceandquiet.net.au